



IREC Cotton report C2020

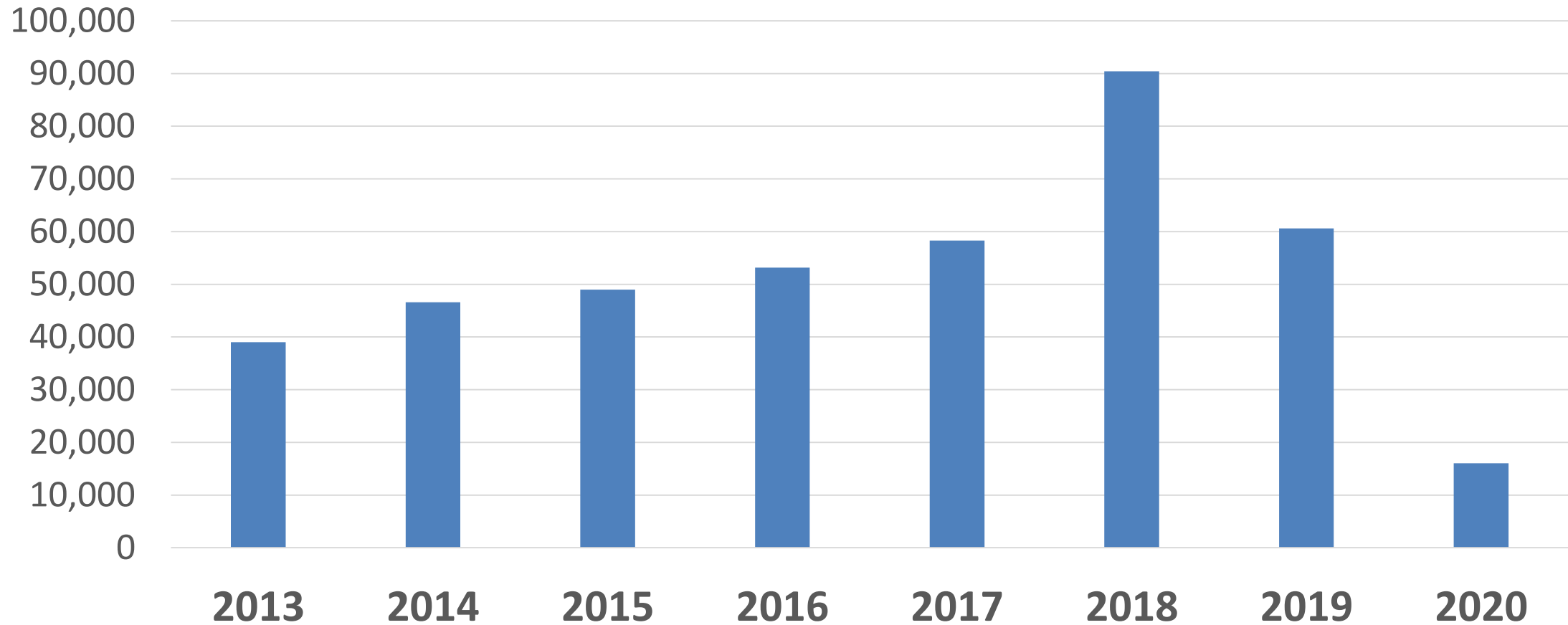
Kieran O'Keeffe
Regional Extension Officer
CottonInfo Southern NSW





Disclaimer: General guide only, not comprehensive or specific technical advice. Circumstances may vary from farm to farm. To the fullest extent permitted by law, CSD expressly disclaims all liability for any loss or damage arising from reliance upon any information, statement or opinion in this document or from any error or omissions in this document.

Cotton area (ha) Southern NSW



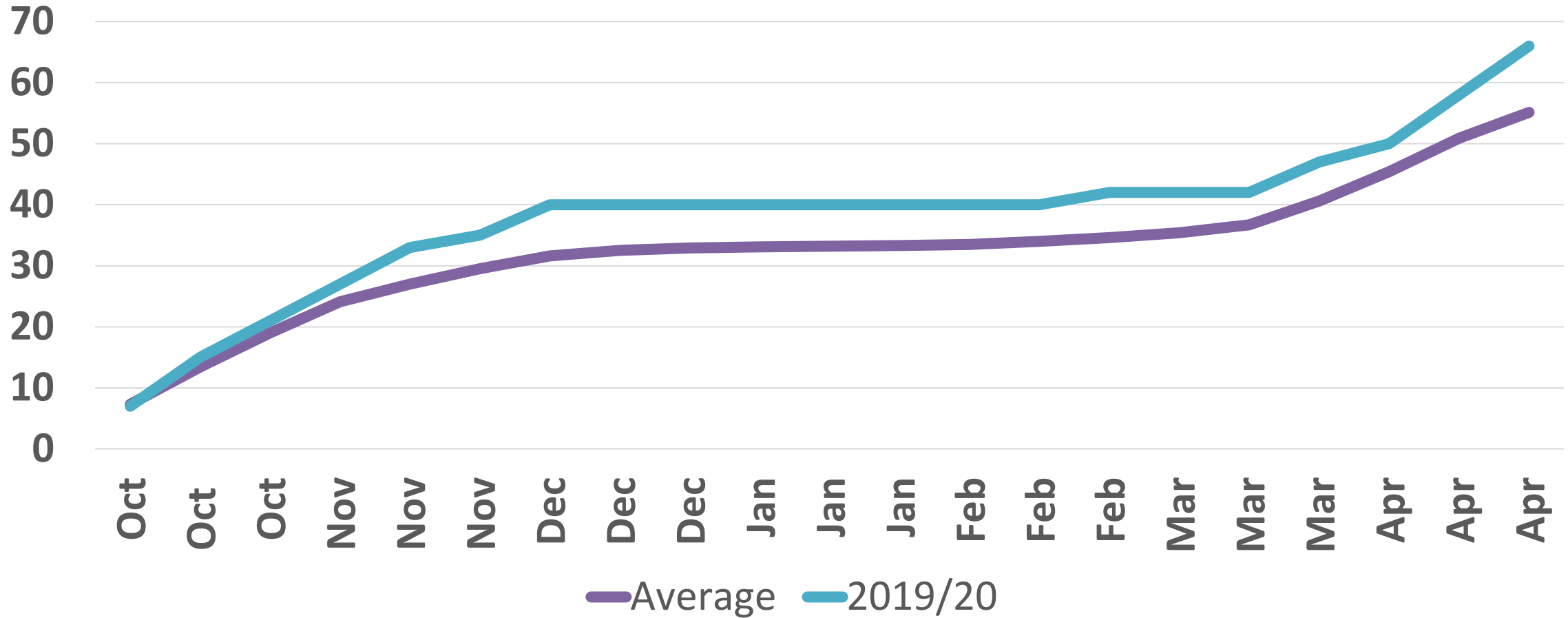
is a joint initiative of



Best Practice



Cold shocks



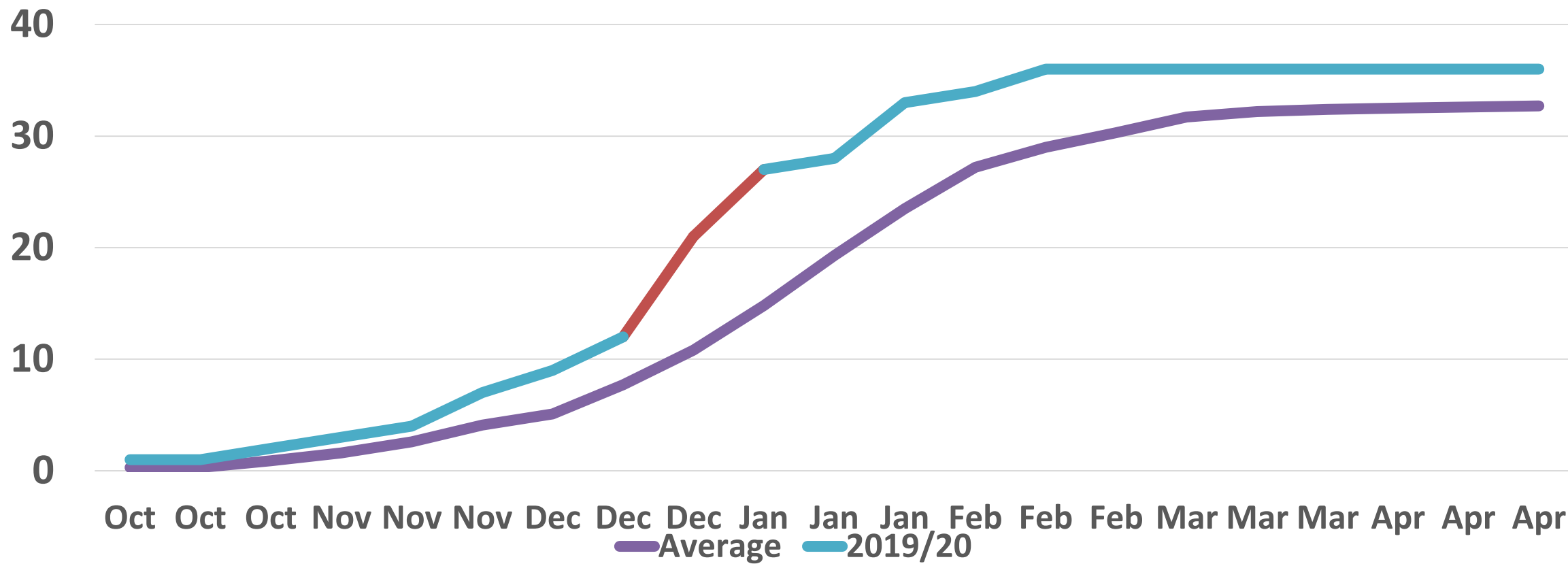
is a joint initiative of



Best Practice



Hot shocks



Fibre quality

**A season for low
micronaire
discounts**

**“Less issues with
714 B3F than 746
B3F”.**



CottonInfo is a joint initiative of



COTTON
AUSTRALIA

Best Practice



Location	Seasons	Years with potential low Mic
Hillston	2020 -2000	1
	2000 - 1980	3
	1980 -1960	5
Hay	2020 -2000	3
	2000 -1980	6
	1980 -1960	9
Carrathool	2020 -2000	5
	2000 - 1980	6
	1980 -1960	9
Griffith	2020 -2000	4
	2000 - 1980	9
	1980 -1960	11
Whitton	2020 -2000	3
	2000 - 1980	11
	1980 -1960	13
Coleambally	2020 -2000	6
	2000 - 1980	13
	1980 -1960	15
Deniliquin	2020 -2000	14
	2000 - 1980	17
	1980 -1960	19

Risk of low micronaire potential

- Some seasons there will be a risk of low micronaire
- The risk has reduced with warmer seasons
- The risk increases as you move south and needs to be managed

Gross margin 2020 (averages)

- Variable costs \$3860
- Total income \$6172
- Gross margin/ha \$2312
- Gross margin/ML \$231

Southern NSW Gross margins

	Income /ha	Variable costs /ha	GM/ha	GM/MI
2016	\$7,200	\$3,895	\$3,305	\$330
2017	\$5,458	\$3,404	\$2,058	\$206
2018	\$6,310	\$3,850	\$2,460	\$246
2019	\$7,260	\$3,863	\$3,398	\$340
2020	\$6,172	\$3,860	\$2,312	\$231



is a joint initiative of



Crop	Yield (b/ha)	IRRIGATION System	ML applied # Estimated	ML/BALE
1	13.4	Siphons, 1m hills. 500m runs 1:2000 slope	12.3	0.91
2	13	Siphons 1m hills. 600m runs. .05 slope	10.78	0.83
3	12.22	Siphons, 1m hills 1:2000 slope	12.76	1.04
4	11.92	Bankless 1m hills	9	0.76
5	11.6	Bankless, 1m hills	8	0.69
6	11.4	Siphons 36inch beds 700m runs, slope - 1:1500	10.7	0.94
7	11.37	1m hills. Needs Lasering	11.1	0.98
8	11.3	Siphons, 1 m hills	13.6	1.20
9	11.2	Bankless, 1m hills	9.5	0.85
10	11	Bankless	9	0.82
Average	11.84		10.67	0.9

Comments on the season

“The extended cool start held us back and then there was no heat at the end of the season to make up extra yield”

“Was a crappy season all over”

“ A season we want to forget about”

Lessons from last season

- Planting timing is critical to get right
- Timely irrigation scheduling.
- No back to back is planned
- 714B3F has less risk of micronaire discounts
- Check N status of fallow fields
- Look for season signals early on



is a joint initiative of



Best Practice

