



# Understanding social attitudes related to the success of area- wide weed management

PRELIMINARY FINDINGS FROM THE INTENSIVE SURVEY IN THE RIVERINA

Sonia Graham and Gina Hawkes



UNIVERSITY  
OF WOLLONGONG  
AUSTRALIA



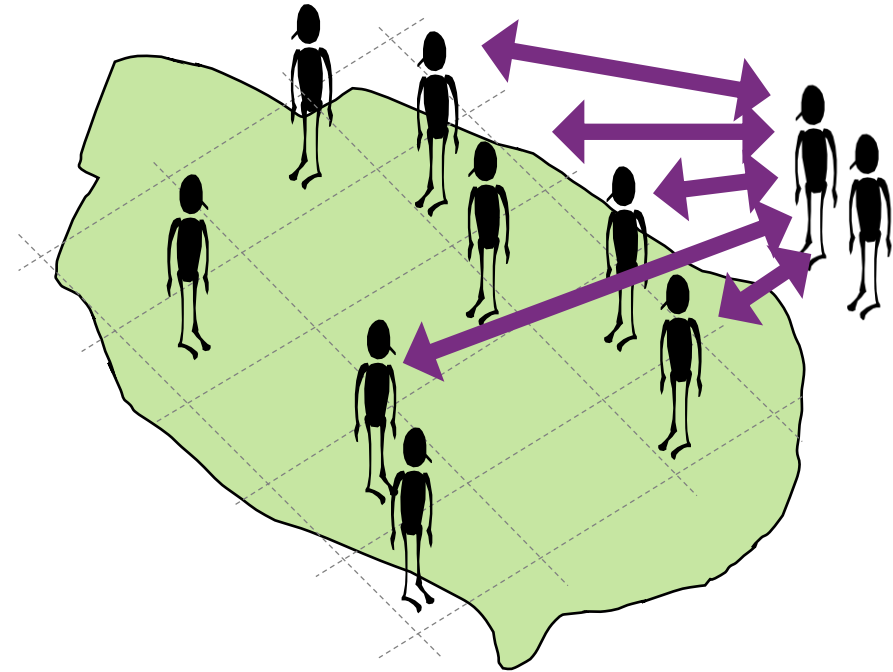
# Introduction



**In mid-late 2020 growers, agronomists, consultants, contractors, extension officers, biosecurity officers and public land managers were interviewed as part of this social research project.**

The aim of the interviews was to:

- learn about the diverse attitudes towards AWM of weeds across three case study regions
- identify factors that explain participation in individual and AWM of weeds
- identify social costs and benefits of AWM of weeds and related practices



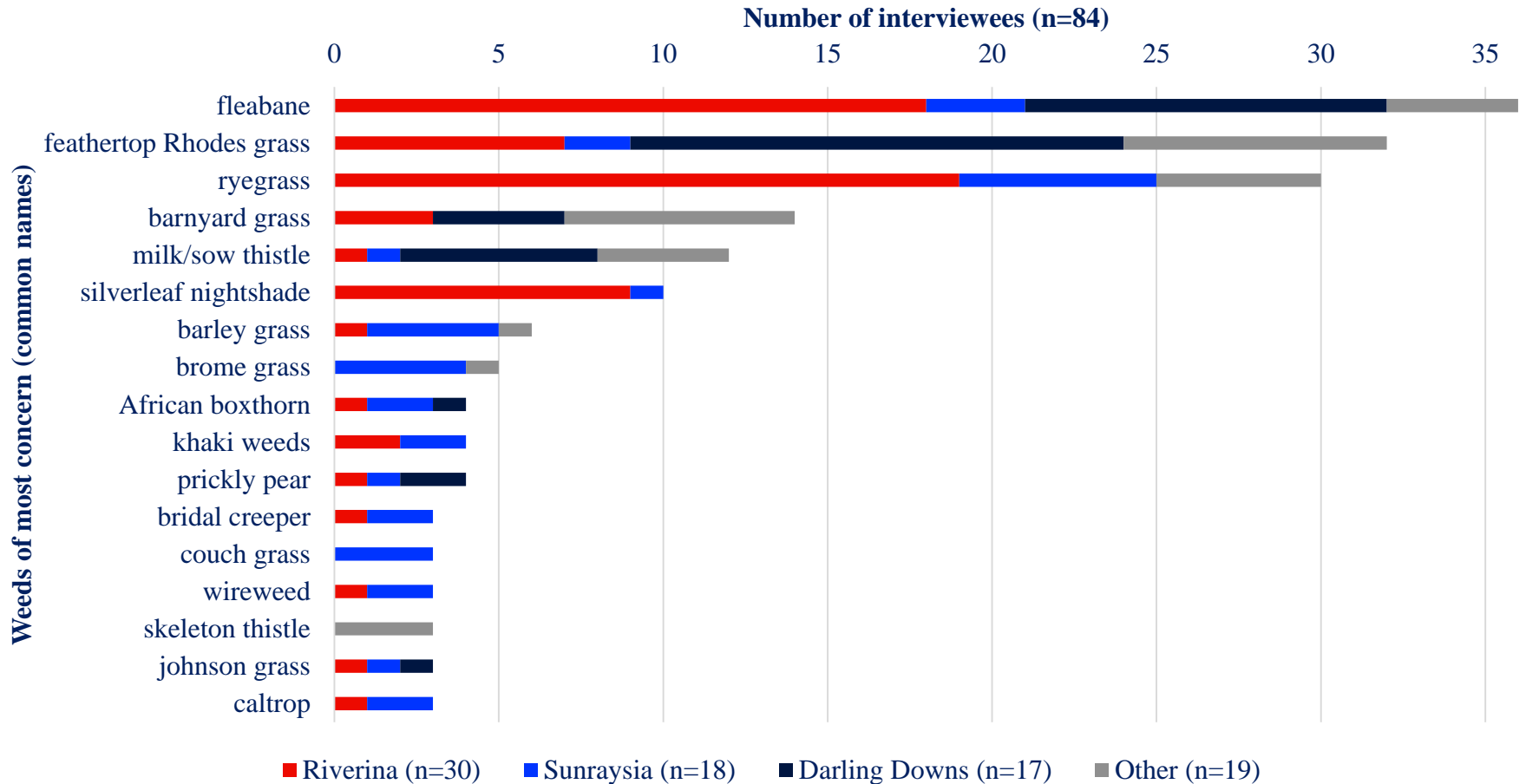
# Method

**Eighty-four people participated in phone interviews between August and December 2020**

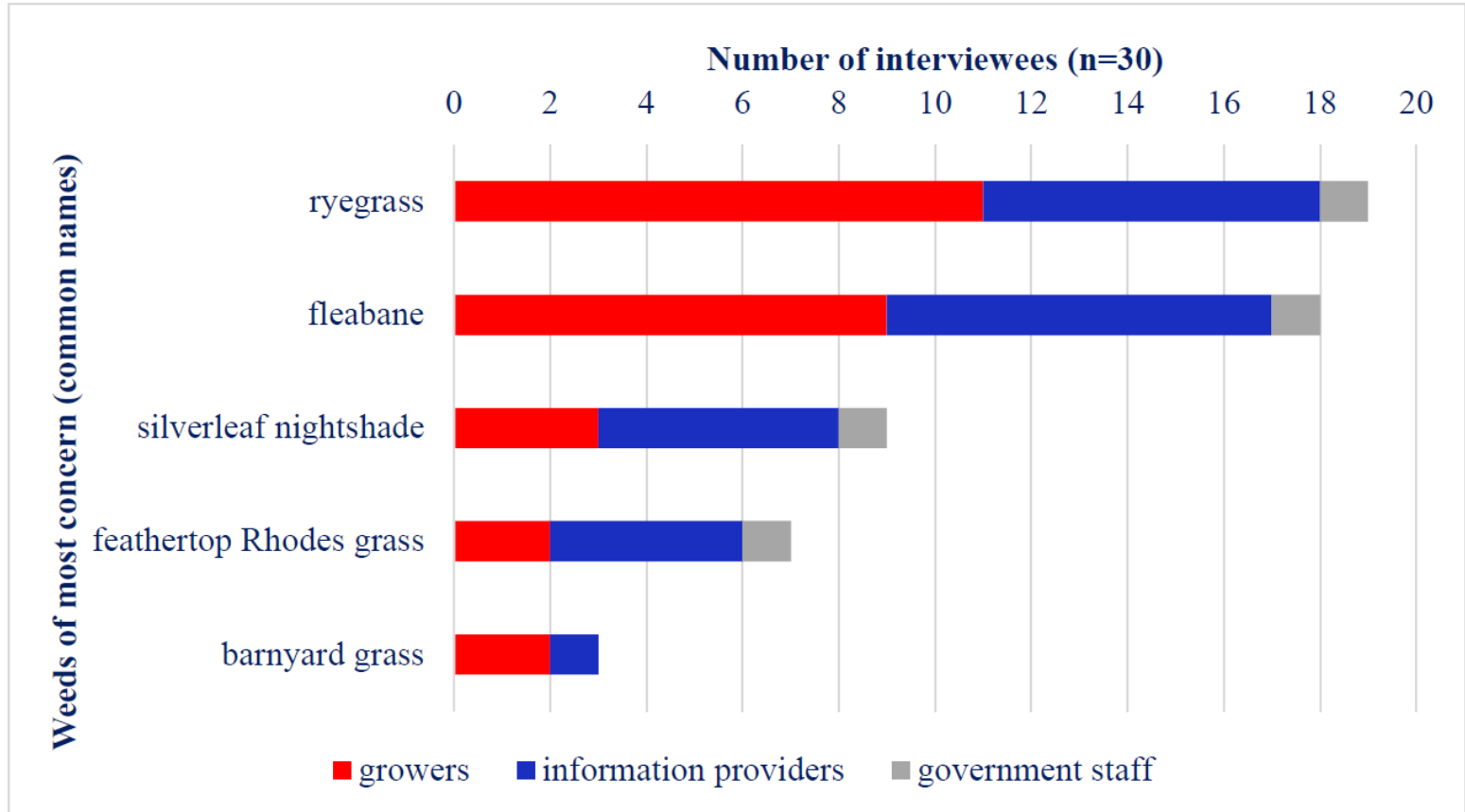
<b>Riverina</b>	30 participants	<b>Information providers</b>	35 participants
<b>Sunraysia</b>	18 participants	<b>Growers</b>	30 participants
<b>Darling Downs</b>	17 participants	<b>Government staff</b>	15 participants
<b>Other NSW</b>	19 participants	<b>Contractors/Landcare</b>	4 participants

The interviews involved open-ended questions about interviewees' experiences with and perceptions of: the most concerning weeds in the region; the key issues surrounding the management of weeds; perceptions regarding area-wide management of weeds; and the future of weed management.

# Weeds of most concern

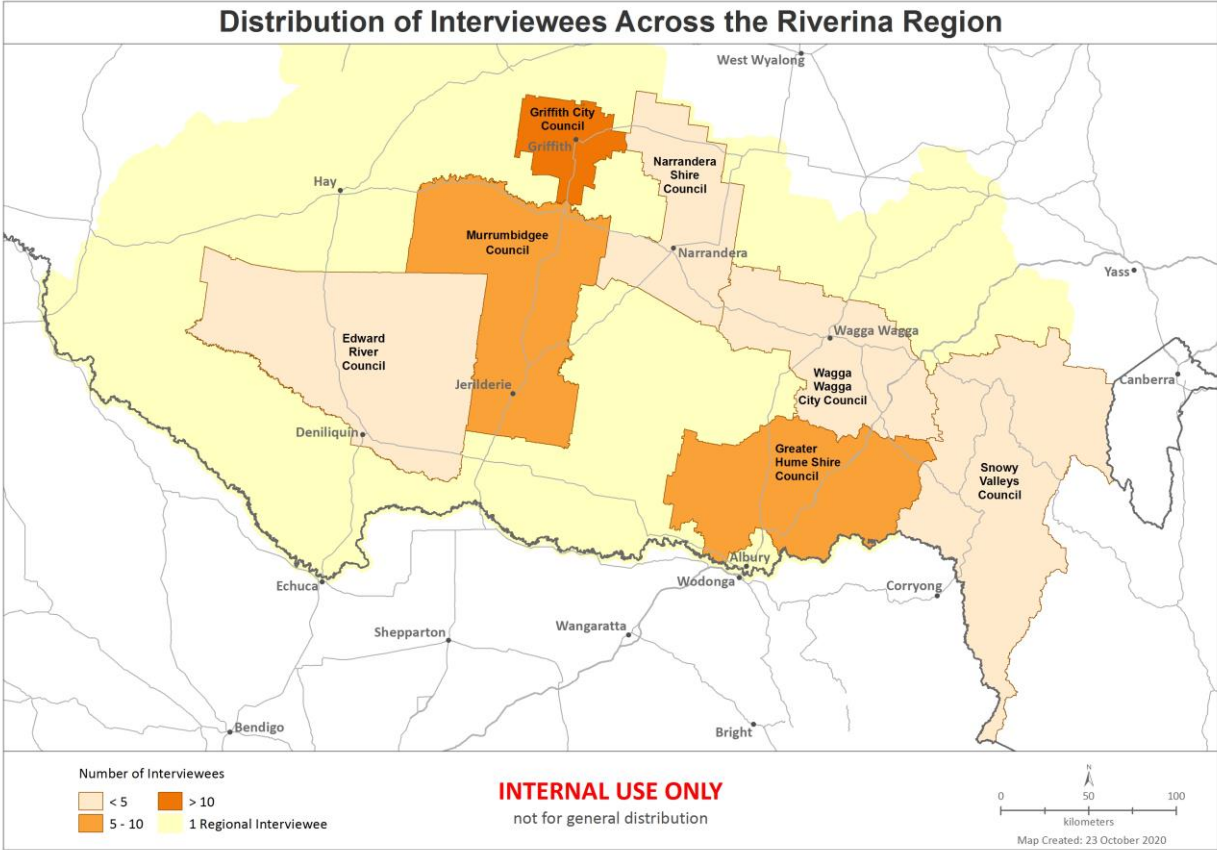


# Weeds of most concern: Riverina



# Overview of Riverina interviews

Map created by Christina Ratcliff



# The most significant weed management issues

## 30 Riverina interviews

1. Herbicide (glyphosate) resistance (12 interviewees)
2. Funding (5)
3. Spray drift (4)
4. Roadsides and waterways (3)
5. Lack of coordination (1 or 2)
6. Lack of understanding of IWM
7. Timing of chemical application (1 or 2)
8. Use of dirty water (1 or 2)
9. Diverse weed priorities (1 or 2)



# Area-wide management of weeds

**Little consensus about what the term means. People frequently mentioned:**

## 1. Geographic Area

- Nearly state-wide
- Valley/floodplain
- Local government area
- Irrigation area
- Common areas
- Group of farms
- Whole farm
- Large-scale area
- Big area
- Whole area
- Broad location

## 2. Who and What

- “everyone”
- “everybody”
- “all”
- “working together”
- Other key terms included “collaboration”, “cooperation” and “coordination”.

## 3. When

- Long-term
- Fallow, winter crop, summer crop
- Synchronised timing – “same thing at the same time”

## 4. Which Weeds

- Ryegrass (7)
- Silverleaf nightshade (7)
- Fleabane (6)
- Boxthorn (3)
- Alligator weed (1)
- Feathertop Rhodes grass (1)
- Horehound (1)
- Khaki weed (1)
- Lippia (1)
- Spiny burr grass (1)



# Area-wide management of weeds

## Continued

### Benefits

- Greater awareness of the issue
- Learn new techniques for using on-farm
- Weed control will be more effective/rigorous
- Better return on investment in weed control

### Challenges

- Leadership
- Bringing people together
- Demonstrating benefits

### Costs

- Time
- Money

### Examples

- Riverina Regional Weeds Committee
- Alligator Weed Taskforce
- Regional Blackberry Forum
- Spiny burr
- Silverleaf nightshade program
- Khaki weed – roadside vegetation area
- Boxthorns – taking a coordinated approach
- Kidney leaf mud plantain

U

Thanks

O

W



UNIVERSITY  
OF WOLLONGONG  
AUSTRALIA