



# Considerations with a Wet Start

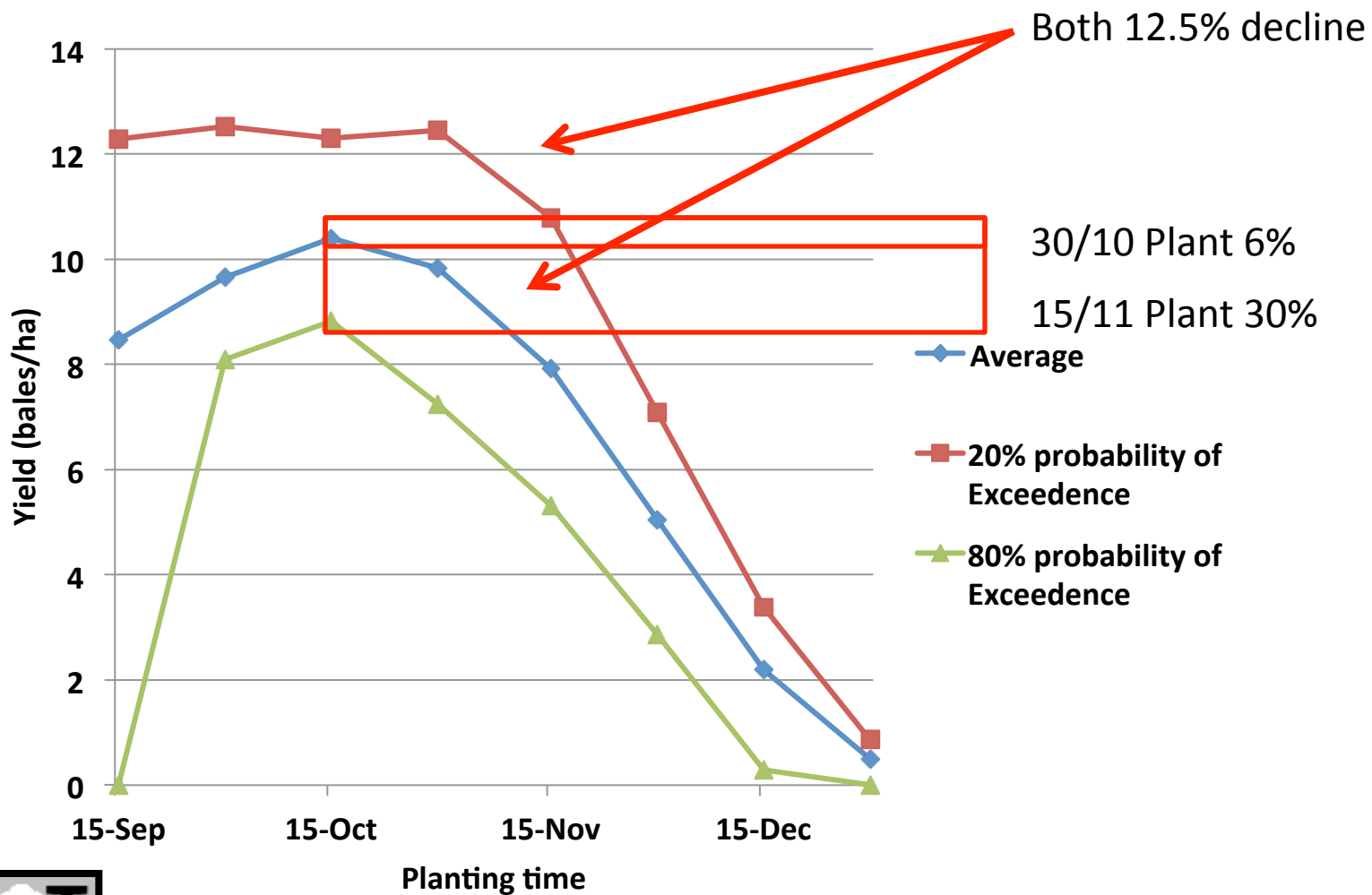
Jorian Millyard  
E & D Agronomist

Southern NSW



Disclaimer : General guide only, not comprehensive or specific technical advice. Circumstances vary from farm to farm. To the fullest extent permitted by law, CSD expressly disclaims all liability for any loss or damage arising from reliance upon any information, statement or opinion in this presentation or from any errors or omissions in this document

# Effect of Planting Date on Yield Potential Southern NSW





# Variety Maturity Rates

CSD Cotton Varieties Incorporating the Bollgard 3 Technology

Currently Releasing 4 Varieties :

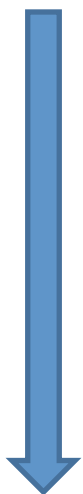
- Sicot 707 B3F

- Sicot 714B3F

- Sicot 746B3F

- Sicot 748B3F

- Sicot 754B3F



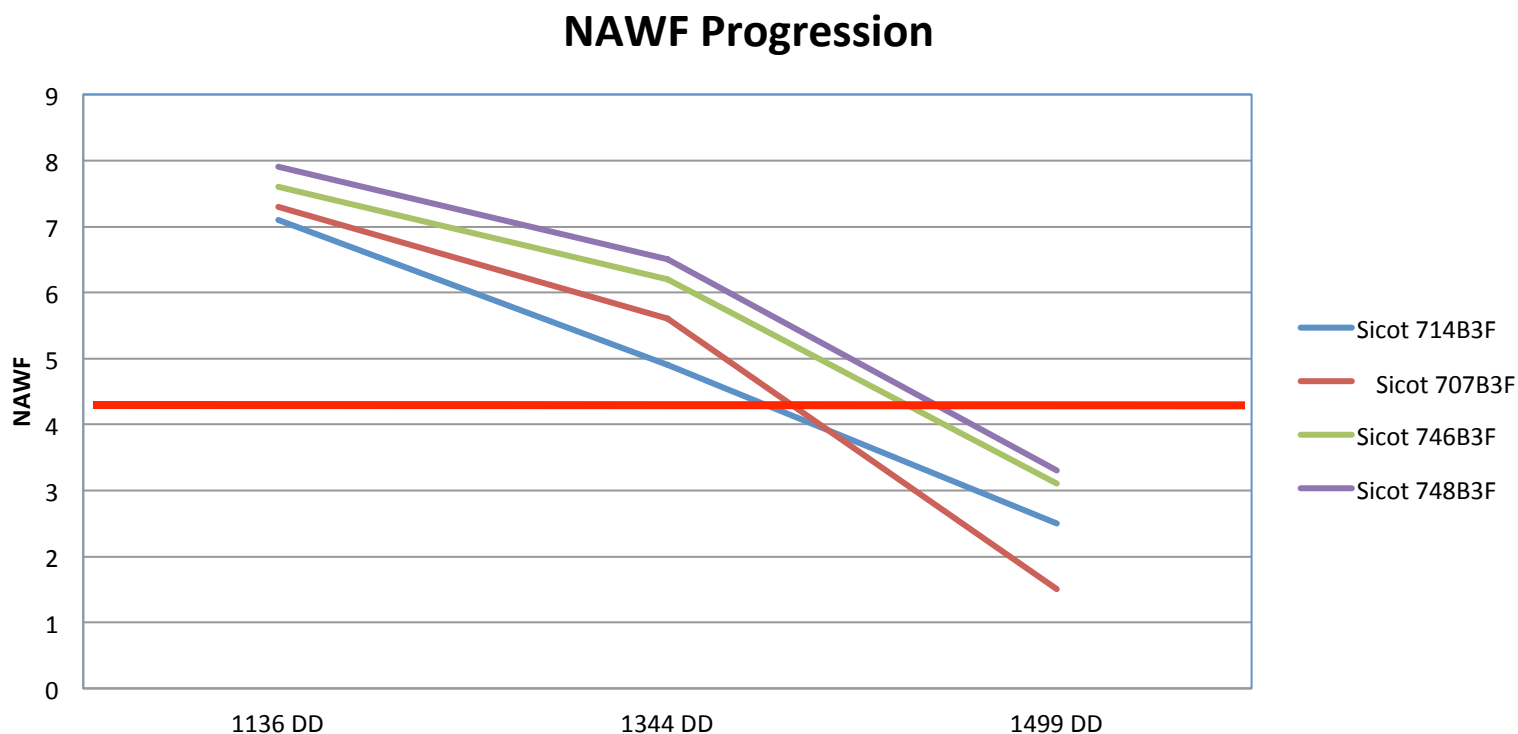
M  
A  
T  
U  
R  
I  
T  
Y



Sicot 707 B3F came in earlier by about two weeks



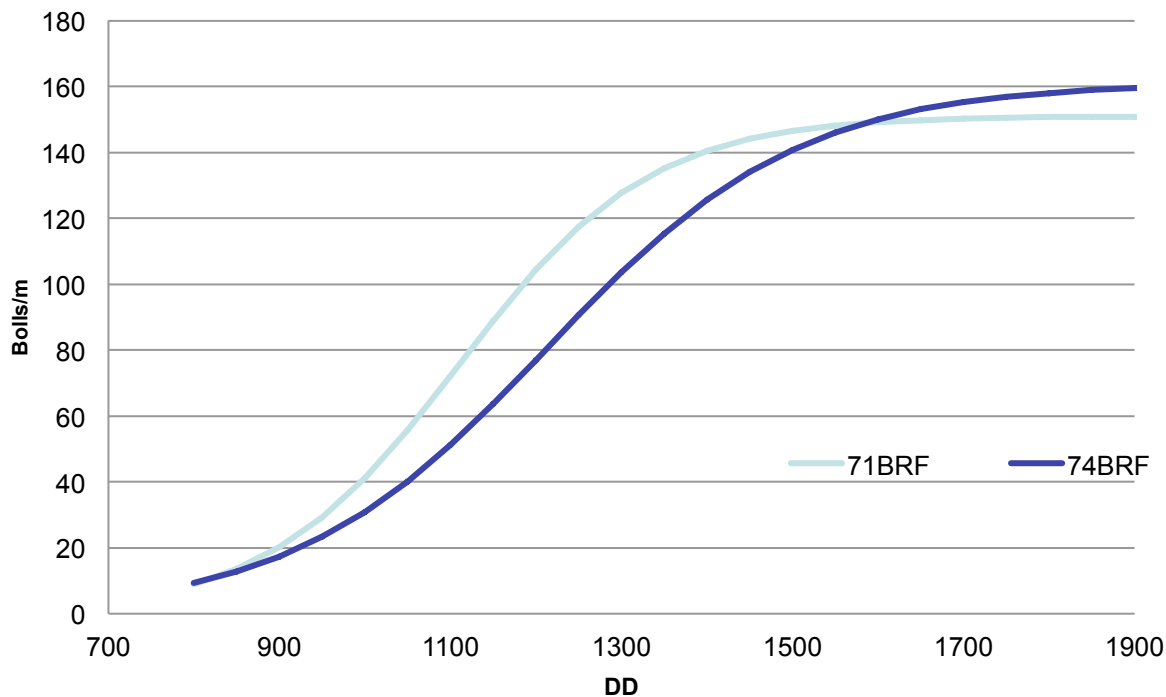
# Flower Progression Bollgard 3 Varieties



Cut Out (4NAWF) 707/714 earlier than 746/748  
707 cuts itself out



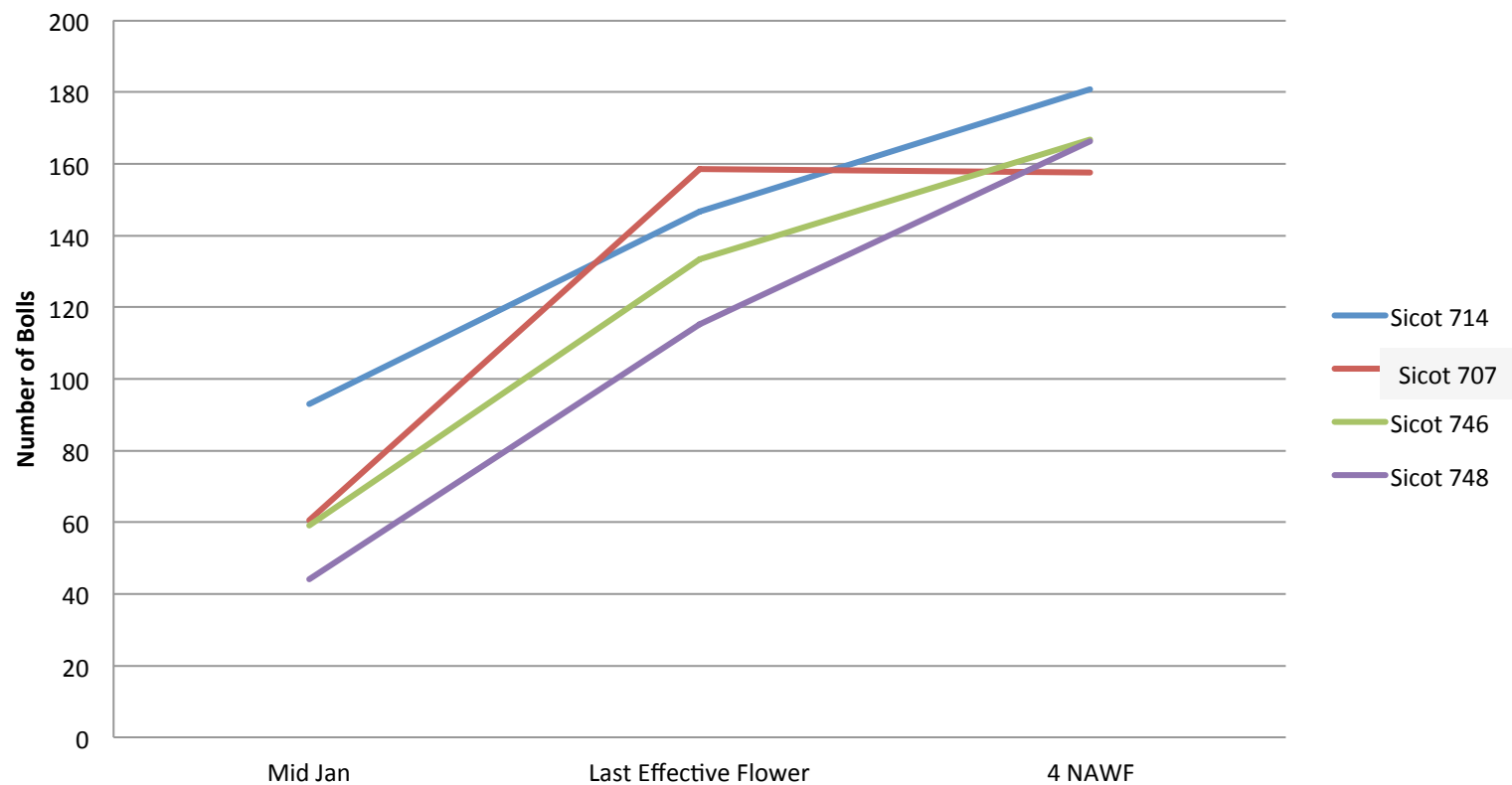
# Boll Development



- Cross over 71 family v 74family – 1600 DD
- 74 family has a higher yield potential, but do you have the heat units to get there?
- 71 family will put on more bolls earlier than 74 family (however lower boll weight)

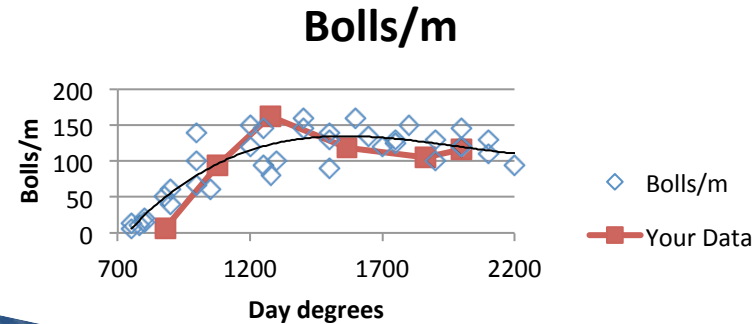
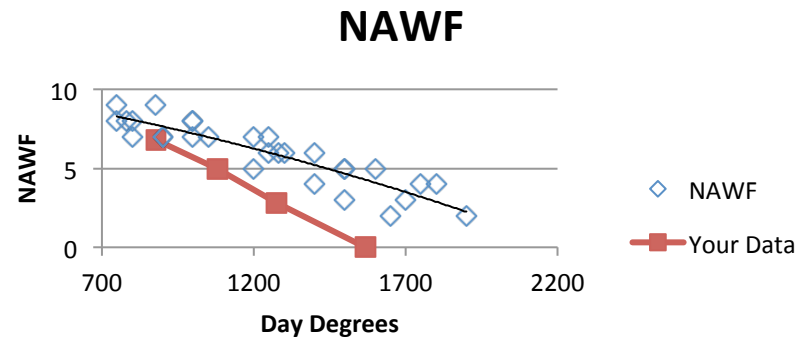


# Boll Development Bollgard 3 Varieties Southern NSW



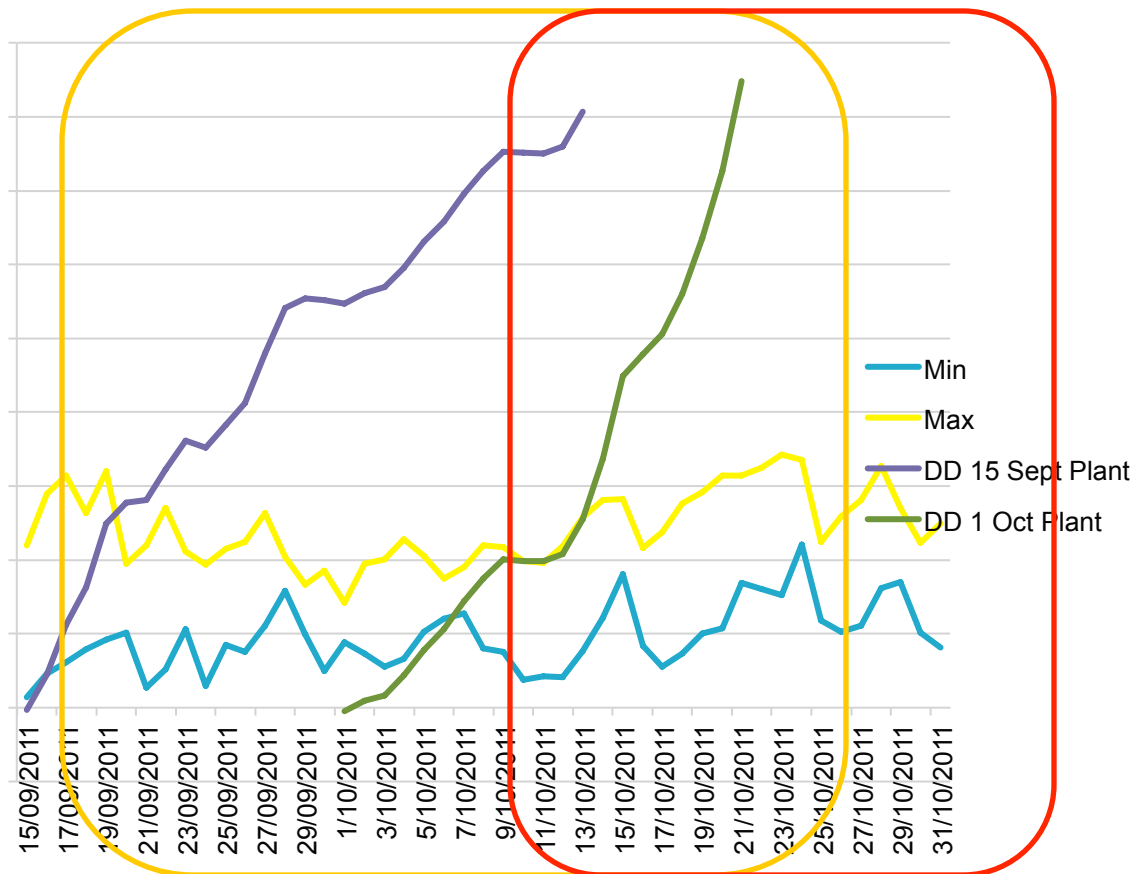
# Managing Growth

- Balancing Act
- Vegetative v's Reproductive
- Last Effective Flower.
- Cut-out Dates.
- Manage for Earliness.
- Picking in April/May not June/July.
- Use of Growth regulants (Pix)
- Plant mapping is very important





# Temperature Case Study



Currently :

- 15/9 plant 95 DD, 23 CS
- 1/10 plant 50 DD, 9 CS (12/10/16)

27 days in the ground with only 5 Days of growth verses 11 days and 4 Days of growth.

Last Year 1/10 Plant 106DD, 3 Cold Shock.

Later Plant = Warmer Temperatures – less cold shock

Orange : 29 Days to Reach 80 DD 15/9/11

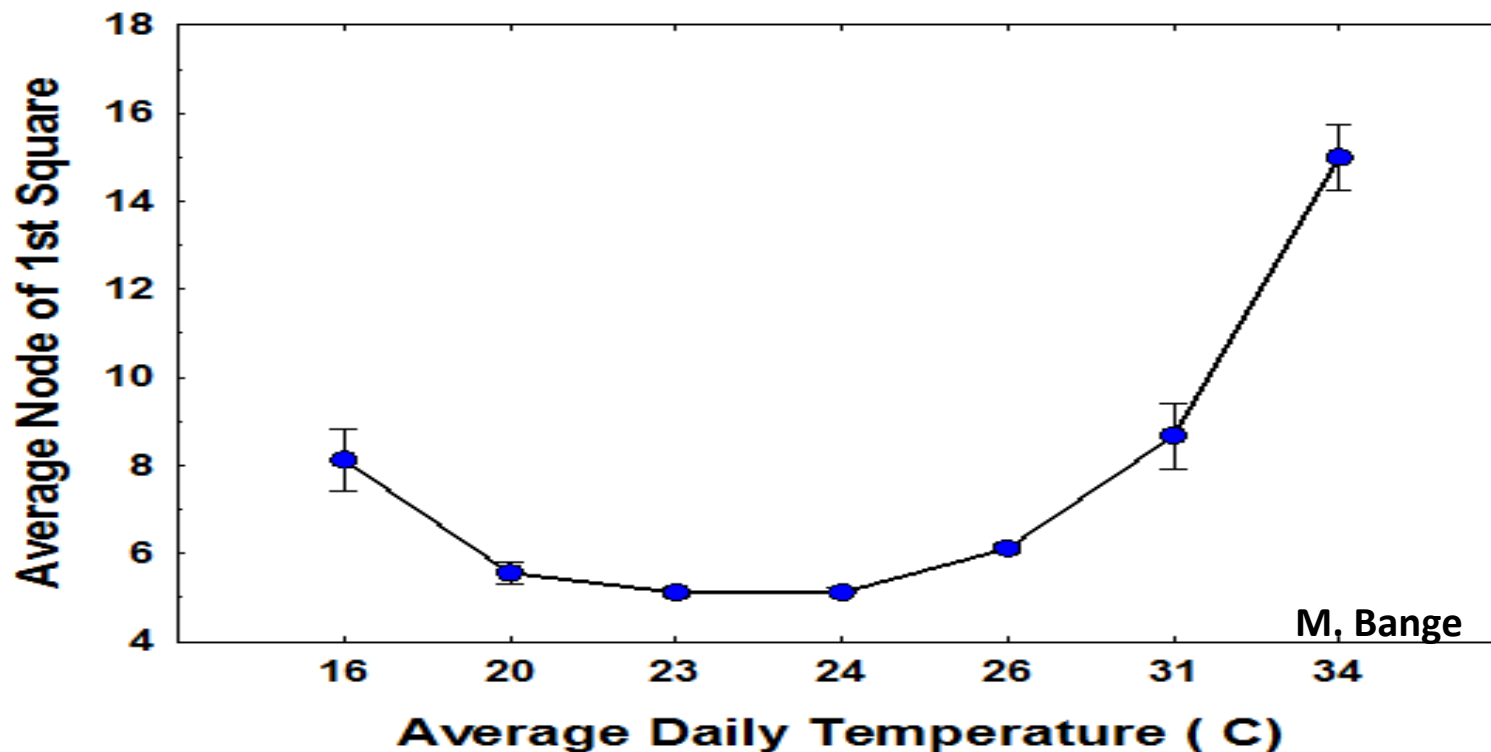
Red : 21 Days to Reach 80 DD 1/10/11





# Temperature Effect on Cotton

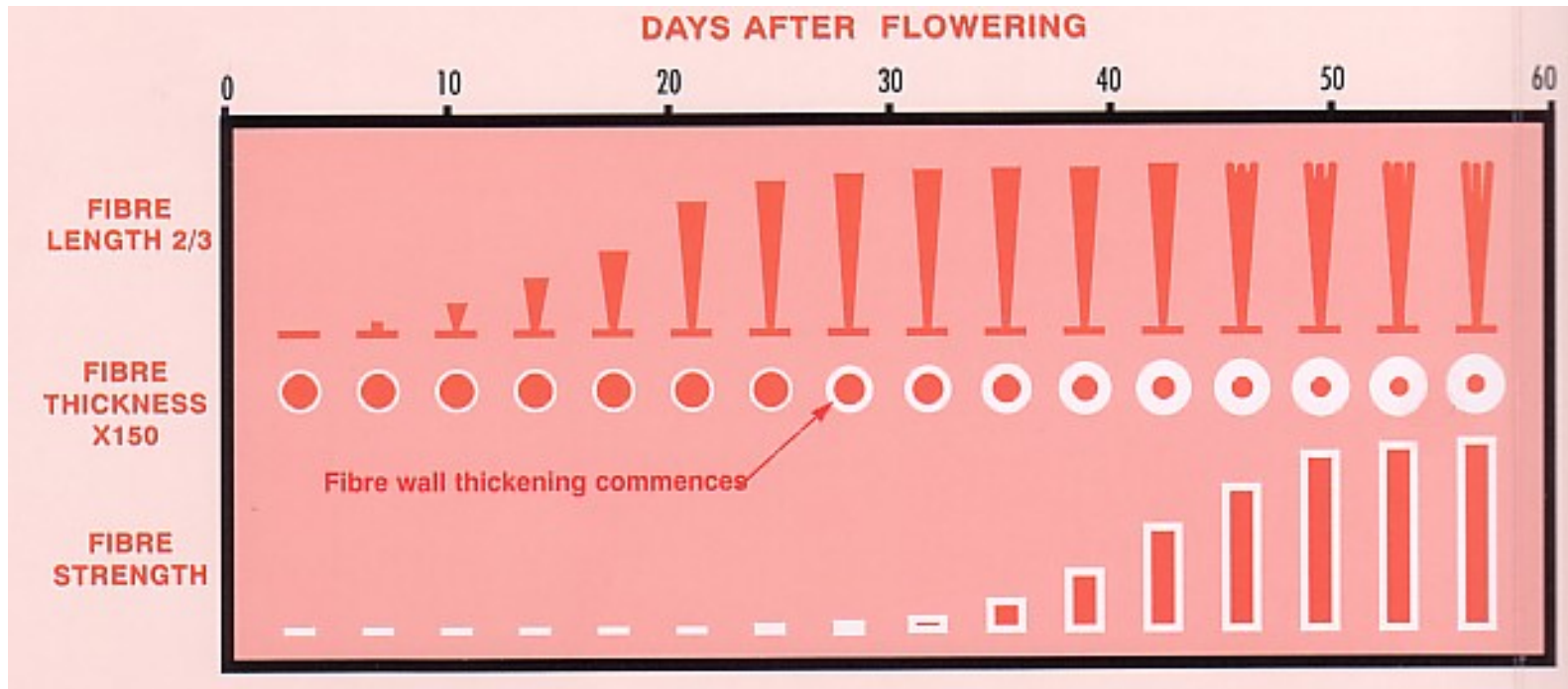
## Nodes to 1<sup>st</sup> Square



Later Plant = Warmer Start

Lower fruit set (node 6)

# Don't Forget Cut Out Fibre Development



60 Day with warm weather.

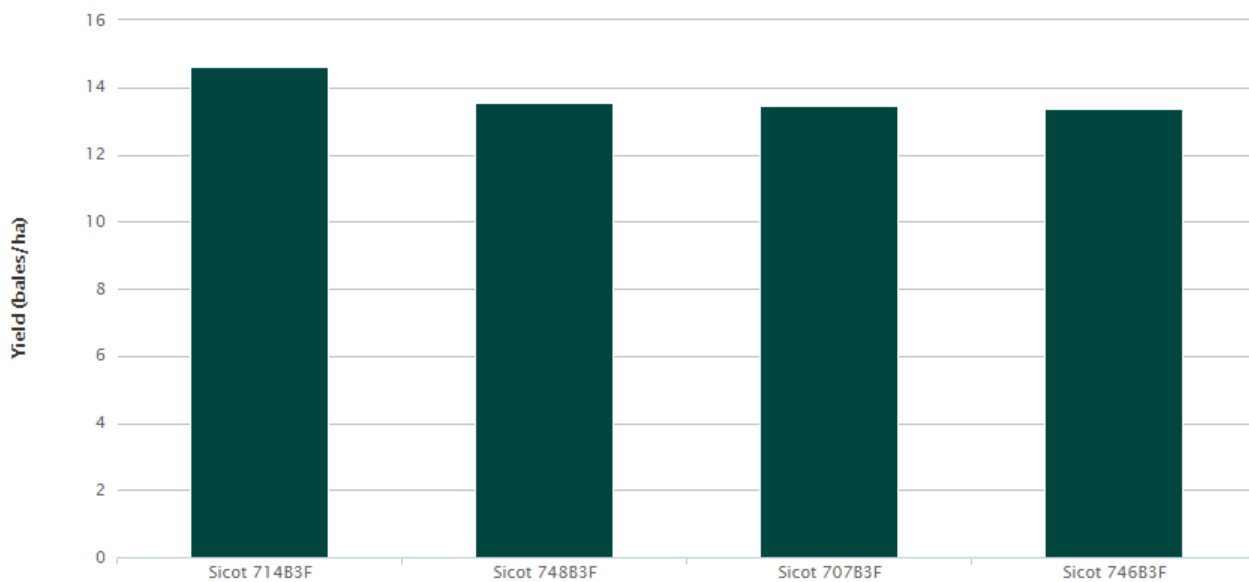
70-90 with Cool weather.

Delay Cut out – Delay Pick and Potentially Effect Fibre Quality (Discounts)



# Carathool 16/10/15 Planted

Variety Summary Crop Summary



Variety	Yield (bales/ha)	Yield (bales/ac)	% of ?	Staple (decimal)	Staple (imperial)	Manual Class	Micronaire	Strength (gms/tex)	Turnout (%)	Uniformity (%)
Sicot 714B3F	14.61	5.91	No Data	1.21	39	41-3	4.7	31.8	43.2	83.2
Sicot 748B3F	13.54	5.48	No Data	1.23	39	41-3	4.7	31.5	43.4	82.7
Sicot 707B3F	13.44	5.44	No Data	1.21	39	41-3	4.9	31.9	43.0	83.7
Sicot 746B3F	13.35	5.41	No Data	1.22	39	31-3	4.7	31.5	43.9	82.3

15/11 Plant  
OzCot 24%

Average 3.5 b/ha

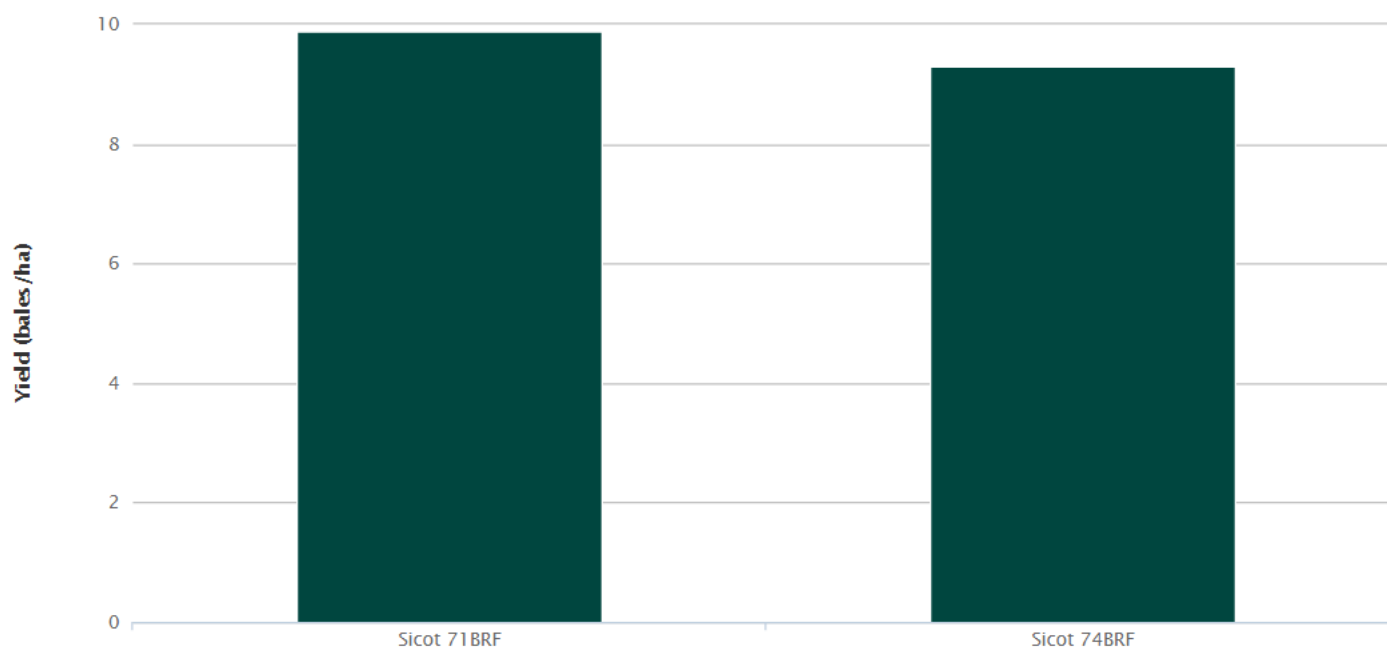


Rudds Point

29/10/11 Planted

Variety Summary

Crop Summary



Variety	Yield (bales/ha)	Yield (bales/ac)	% of Sicot 71BRF	Staple (decimal)	Staple (imperial)	Manual Class	Micronaire	Strength (gms/tex)	Turnout (%)	Uniformity (%)
Sicot 71BRF	9.88	4.00	100.0	1.2	38	21-3	3.8	31.6	36.8	82.3
Sicot 74BRF	9.29	3.76	94.1	1.19	38	21-2	3.9	32.6	39.3	82.2



## Planting Date Trial Results

Discover average yield and quality results for trials in your region based on a particular planting date.

### Select Day

- ☐ After 1st
- ☐ After 5th
- ☐ After 10th
- ☐ After 15th
- ☒ After 20th

### Select Month

- ☐ August
- ☐ September
- ☒ October
- ☐ November
- ☐ December

### Select Years

- ☒ 2004
- ☒ 2005
- ☒ 2006
- ☒ 2007
- ☒ 2008
- ☒ 2009
- ☒ 2010
- ☒ 2011
- ☒ 2012
- ☒ 2013
- ☒ 2014
- ☒ 2015
- ☐ 2016
- ☐ 2017

### Select Region

- ☐ Balonne
- ☐ Central Queensland
- ☐ Darling Downs
- ☐ Gwydir
- ☒ Lachlan
- ☐ Macintyre
- ☐ Macquarie
- ☐ Namoi (Lower)
- ☐ Namoi (Upper)
- ☒ Southern
- ☐ Western



# Thank You

