



Department of Primary Industries

Department of Regional NSW



# Varroa Mite

## Emergency Response

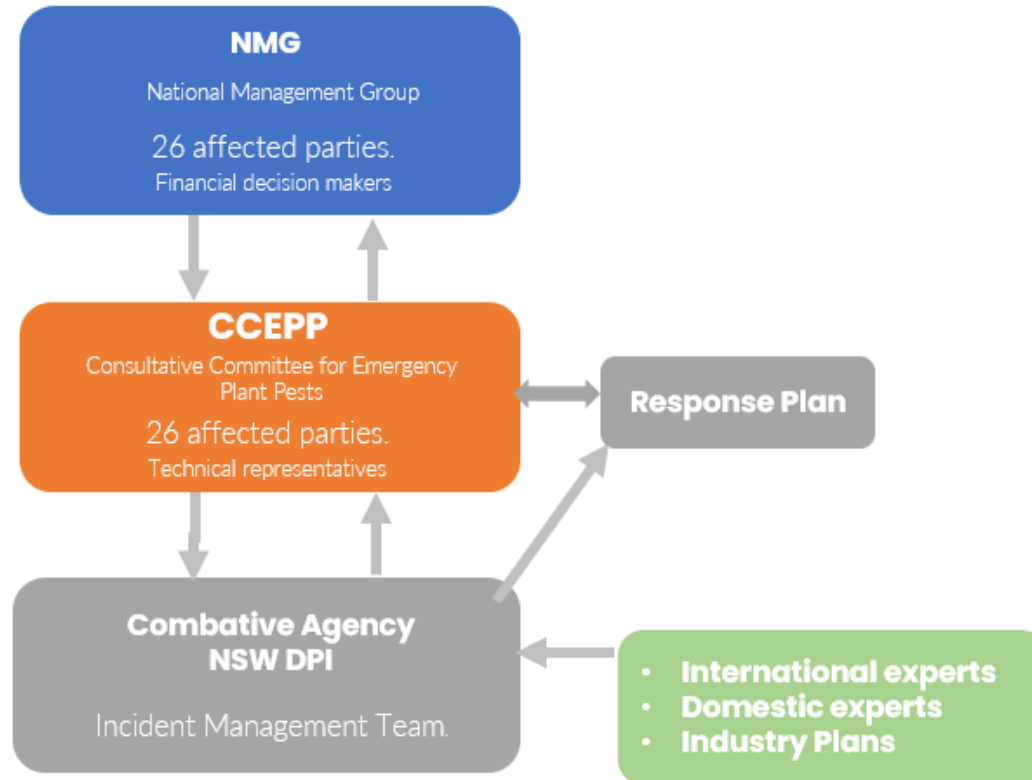
Riverina IREC Update – 5 September 2023

Presenter details

[dpi.nsw.gov.au/varroa](https://dpi.nsw.gov.au/varroa)

# Emergency Plant Pest Response

## Emergency Plant Pest Response



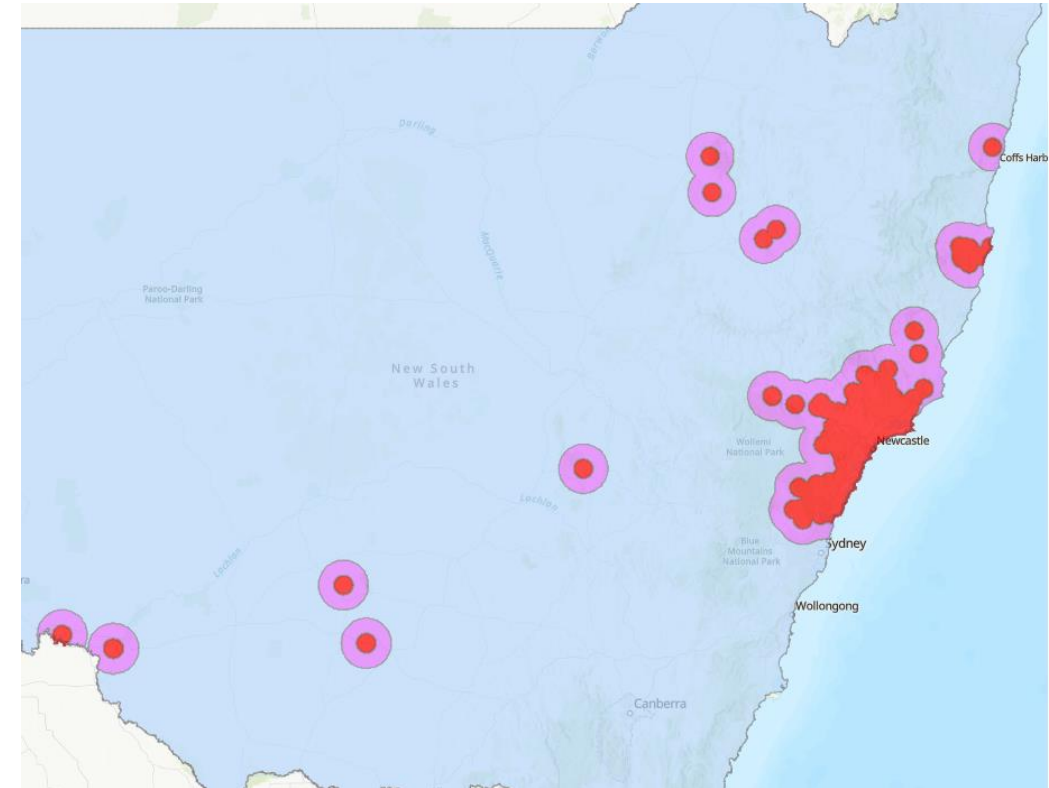
### Affected Parties

- The Commonwealth of Australia
- The State of New South Wales
- The State of Victoria
- The State of Queensland
- The State of South Australia
- The State of Western Australia
- The State of Tasmania
- The Northern Territory of Australia
- The Australian Capital Territory
- Almond Board of Australia Inc
- Apple and Pear Australia Ltd
- Australian Honey Bee Industry Council Inc
- Australian Lychee Growers Association Inc
- Australian Macadamia Society Ltd
- Australian Mango Industry Association Ltd
- Australian Melon Association Inc
- AUSVEG Ltd
- Avocados Australia Ltd
- Canned Fruit Industry Council of Australia Ltd
- Cherry Growers of Australia Inc
- Grain Producers Australia Ltd
- Passionfruit Australia Inc
- Raspberries and Blackberries Australia
- Strawberries Australia Inc
- Summerfruit Australia Ltd

# Current situation

## Recent detections:

- **Kempsey area** – some zone extensions
- **Narrabri** – EEZ and SEZ established (linked to Kempsey cluster)
- **Tamworth** – EEZ and SEZ established (linked to Kempsey cluster)
- **Euroley, Euston, Nericon and Balranald** – in hives moved to support almond pollination. EEZ and SEZ established
- Evolving situation - extensive tracing and surveillance at Kempsey and on hives linked to the area continues
- **247** infested premises as of 4 Sept 2023
- Visit [www.dpi.nsw.gov.au/varroa](http://www.dpi.nsw.gov.au/varroa) for interactive map, restrictions, conditions and permits



**If established in Australia, Varroa mite could add \$52M/year in management expenses, and the unmitigated spread of Varroa mite across Australia will kill most of the wild European Honey Bee population within 5 years.**

# Testing, Permits & Hive Movements

- Ongoing Tracing & Surveillance imperative
- Alcohol Wash at least every 16 weeks & report results to NSW DPI
- Submit Hive Declaration Forms for Blue Zone movements
- A Permit is required for any movement involving a purple zone, and strict conditions will apply.
- Please note, refer to the Emergency Order at [www.dpi.nsw.gov.au/varroa](http://www.dpi.nsw.gov.au/varroa) for details of allowable movements from SEZ and EEZ locations in Southern NSW
- All beekeepers must register with NSW DPI; and, if you are in a red or purple zone, you must notify us of the location of your hives
- Visit [www.dpi.nsw.gov.au/varroa](http://www.dpi.nsw.gov.au/varroa) or phone 1800 084 881 for info

**NSW Police** are assisting NSW DPI in monitoring compliance with hive movement and permit requirements, with checks completed regularly.

Know your obligations and ensure you carry the appropriate documentation. Penalties apply.



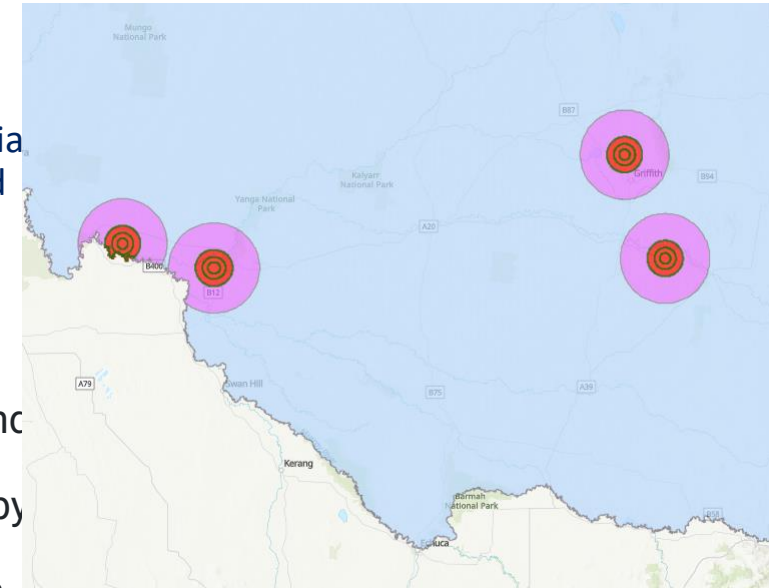
# Southern NSW Emergency Zones

Euroley, Euston, Nericon & Balranald

- Hives were transported from the Kempsey area to support almond pollination prior to discovery of Kempsey infestation
- Establishment of Eradication (red) and Surveillance (purple) zones
- Increased biosecurity risk as a result of rapidly declining floral resources in the area, therefore special approach developed for these zones, given the extremely low risk that Varroa has been transported beyond 3km from the IP location.

**Allowable movements from Southern NSW Surveillance (purple) zones** – beekeepers may move to a location in the blue zone, provided:

- The beekeeper lodges a movement declaration for each load of bees PRIOR to the move and the hives are moved to a General Emergency (blue) zone site
- Hives are moved directly to the destination site and not moved off that site until approved by NSW DPI
- Beekeepers must carry a copy of the hive movement declaration with them for the duration of the move
- The beekeeper alcohol washes up to 64 hives on arrival and reports the results to NSW DPI. The beekeeper takes and retains photograph of at least one alcohol wash which is time and date stamped and shows the approximate location
- *Refer to the Emergency Order for full details of movement requirements*



# Southern NSW Emergency Zones

## Allowable movements from Southern NSW Eradication (red) zones

### Hives within a 0-3 kilometre radius of an IP

- subject to euthanasia and will be eligible for Owner Reimbursement Costs, even if there is a change in the response plan.
- Beekeepers must not move bees, hives or apiary equipment out of or within the Varroa mite eradication emergency zone under this Division
- must permit an authorised officer to insert miticide strips into all hives and sticky mats into a representative sample of hives for surveillance, diagnosis and control of Varroa mite.

### Hives within a 3 - 6 kilometre of an IP

- can move their hives, under strict conditions anywhere within the Euroley or Nericon emergency zones, once miticide strips and sticky mats have been in the hives for 48 hours.
- Ongoing surveillance will be completed once they arrive at the new location.
- Hives must not be moved again unless approved by NSW DPI, with strips to remain in hives for 6-8 weeks.
- Each movement will require one hive movement declaration per load of bees.

### Hives within a 6 - 10 kilometre of an IP

- can move their hives to any point that is within the greater NSW General Emergency (Blue) Zone with a hive movement declaration in place for each load of bees PRIOR to the move and they must carry a copy of the declaration with them during the move.
- Miticide strips will be placed in hives on arrival at the new location, if not prior to the movement, and will remain for 6 – 8 weeks. Further movement will be subject to surveillance requirements.

# Help & Assistance

- Jamie Perry-Meijer: 0477 544 379 or [jamie.perry-meijer@dpi.nsw.gov.au](mailto:jamie.perry-meijer@dpi.nsw.gov.au)
- Jodie Magner: 0477 070 453 or [jodie.magner@dpi.nsw.gov.au](mailto:jodie.magner@dpi.nsw.gov.au)
- Varroa Mite Emergency Response: [varroa.response@emergency.dpi.nsw.gov.au](mailto:varroa.response@emergency.dpi.nsw.gov.au) or phone 1800 084 881



*“Look after yourself!”*