



Department of
Primary Industries

NSW DPI Research update July 2023

David Troidahl
Leader Summer Cropping



Department of
Primary Industries

These Projects are co- funded by NSW DPI and:
CRDC
GRDC
Agrifutures Australia
Horticulture Innovation Australia
ACIAR
Griffith & District Citrus Growers Inc.
Wine Australia
Plant Biosecurity Research Initiative
DAFF

Cotton Agronomy





Department of Primary Industries



Cotton Weeds



Bare earth trial



Camera spray residual trial



Rice Agronomy





Department of
Primary Industries



Winter cereals

Long Coleoptile Durum Wheat



Heat tolerance in canola



Optimising pulse profitability linking physiology to tactical agronomy



Using satellite imagery and environmental data to identify optimum canola windrow timing.

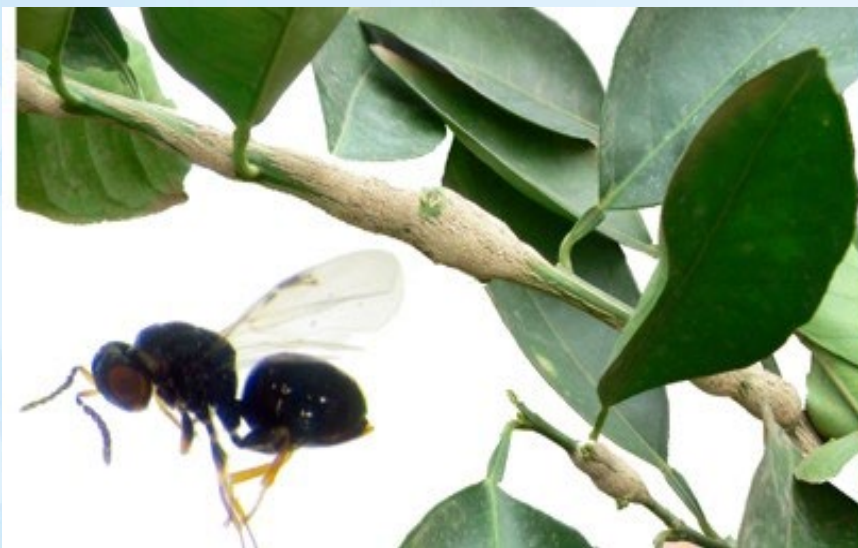


Pulse NVT seed bulk up



Horticulture Entomology

Citrus Gall wasp



Fuller's rose weevil





Huánglóngbìng (Citrus greening disease)





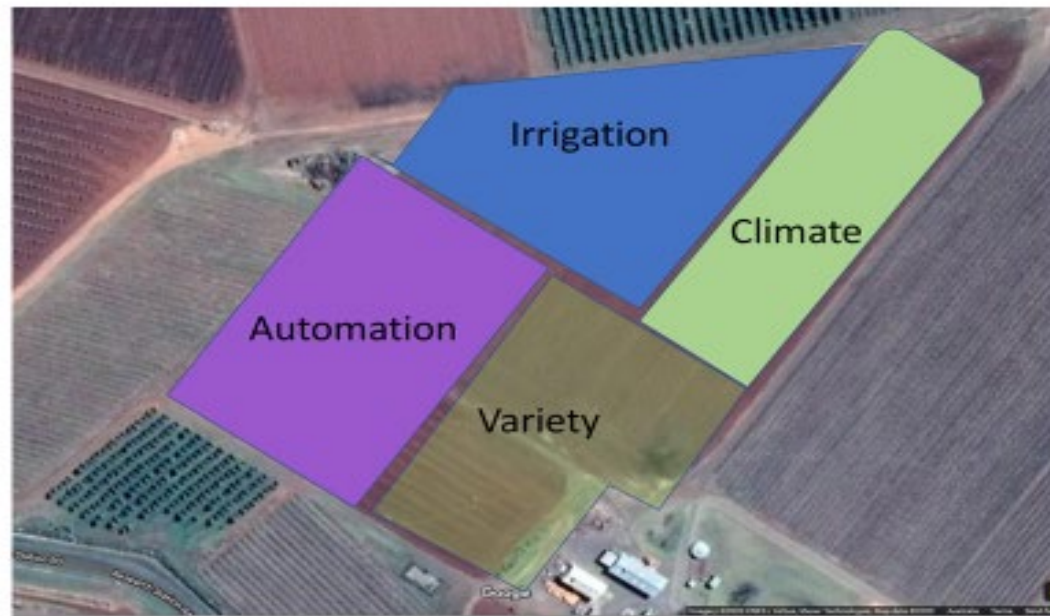
Department of
Primary Industries

Riverina Centre for Permanent Horticulture



Plans for the future

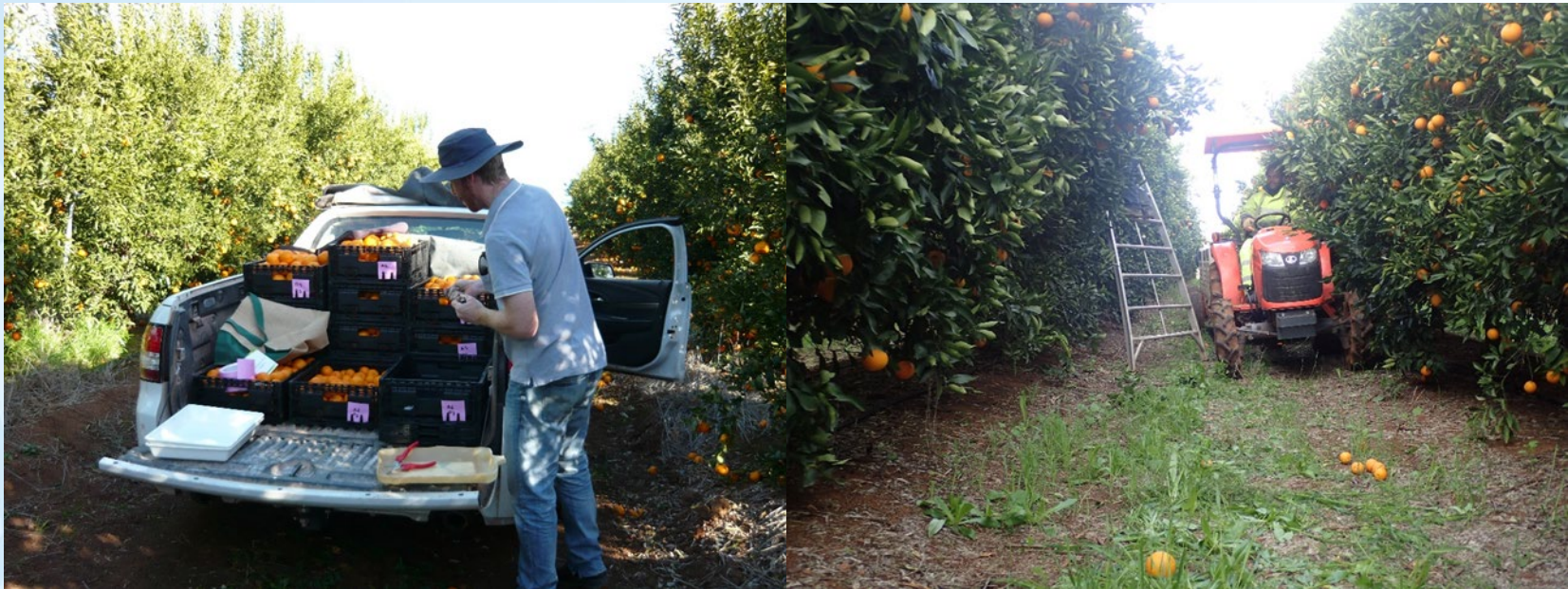
- Collaboration with industry
- Riverina Citrus Centre of Excellence



**Hort
Innovation**
Strategic levy investment



Citrus black core rot



Citrus IPDM extension program

An IPM consultant from the Central Burnett and growers from Northern NSW and Sunraysia share their experiences with citrus gall wasp.

Inside for zoom meeting, followed by a field session with NSW DPI and AgNova Technologies.

Wednesday 19th October 2022

Griffith 10.00 am to 11.30 am
NSW DPI Griffith, 200 Murray Road (conference room and orchard)

Yanco 2.30 pm to 3.00 pm
Yanco Agricultural Institute, 2198 Irrigation Way East (Seminar room 1 and orchard)
Further information Andrew Creek (NSW DPI) on Mob:0428 934 952


IPDM for the citrus industry








This project has been funded by fruit innovators using the citrus research and development funds from the Australian Government

Viticulture





Department of
Primary Industries



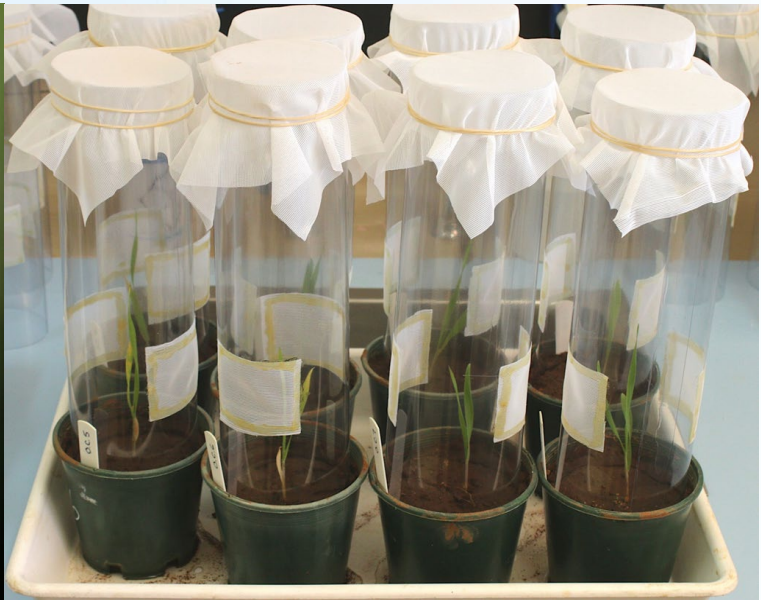
Plant Biosecurity Research & Diagnostics



Before and after Olive Quick Decline Syndrome

Australian tube spittlebug, *Pectinariophyes stalii*.







NSW DPI also has a range of responsibilities to prepare, respond to and assist in recovery from animal and plant biosecurity emergencies, natural disasters and other emergencies affecting the sector.



Department of
Primary Industries

Fire



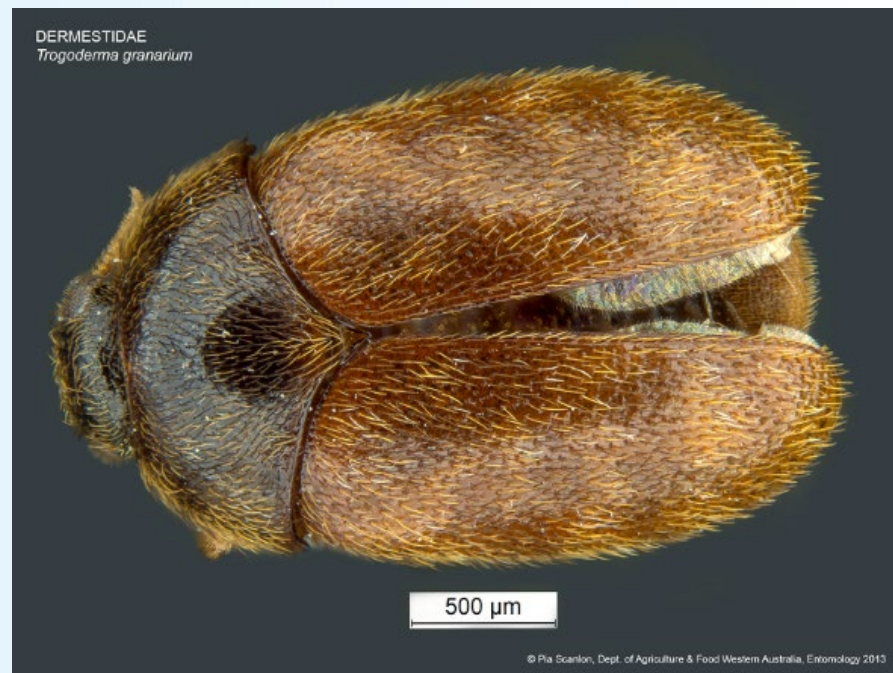
Flood



Drought



Khapra Beetle



Varroa Mite



Thank You

